

\*

Musical staff with a wavy line and a circled 'A' below it.

Musical staff with notes and a circled 'A' below it. Chord:  $B^b 7 \text{ sus}$

Musical staff with notes and a circled 'A' below it. Chord:  $B^b 7 \text{ sus}$

Musical staff with notes and a circled 'B' below it. Chord:  $B^b 7 \text{ sus}$

Musical staff with notes and a circled 'C' below it. Chord:  $A^b \Delta 7 / E^b$ . Chord:  $9 \text{ sus } b9$

Empty musical staff.

Musical staff with notes and a circled 'D' below it. Chord:  $C 7 \text{ sus}$

Empty musical staff.

Musical staff with notes and a circled 'D' below it. Chord:  $B^b 7 \text{ sus}$ . Chord:  $D 7 \text{ sus}$ . Chord:  $A^b \Delta 7 / E^b$ . Chord:  $9 \text{ sus } b9$ . Chord:  $C 7 / 9$

Musical staff with notes and a circled 'D' below it. Chord:  $9 \text{ sus } b9$ . Chord:  $C 7 \text{ sus}$

Empty musical staff.

# MOONGLOW

Handwritten musical notation for the first system of "MOONGLOW". The notation includes a treble clef, a key signature of one flat (B-flat), and a 4/4 time signature. The melody is written on a single staff. Chords are indicated by letters above the staff: E7, A7, Bb7, C, E7, F7, Bb/D, C, C-7, Bb, F-7. The notation is handwritten and includes some corrections and markings.

Handwritten musical notation for the second system of "MOONGLOW". The notation includes a treble clef, a key signature of one flat (B-flat), and a 4/4 time signature. The melody is written on a single staff. Chords are indicated by letters above the staff: E7, A7, Bb7, C, E7, F7, Bb/D, C, C-7, Bb, F-7. The notation is handwritten and includes some corrections and markings.

Handwritten musical notation for the third system of "MOONGLOW". The notation includes a treble clef, a key signature of one flat (B-flat), and a 4/4 time signature. The melody is written on a single staff. Chords are indicated by letters above the staff: E7, A7, Bb7, C, E7, F7, Bb/D, C, C-7, Bb, F-7. The notation is handwritten and includes some corrections and markings.

# METHOD

Handwritten musical notation for the first system of "METHOD". The notation includes a treble clef, a key signature of one flat (B-flat), and a 4/4 time signature. The melody is written on a single staff. Chords are indicated by letters above the staff: E7, A7, Bb7, C, E7, F7, Bb/D, C, C-7, Bb, F-7. The notation is handwritten and includes some corrections and markings.

Handwritten musical notation for the second system of "METHOD". The notation includes a treble clef, a key signature of one flat (B-flat), and a 4/4 time signature. The melody is written on a single staff. Chords are indicated by letters above the staff: E7, A7, Bb7, C, E7, F7, Bb/D, C, C-7, Bb, F-7. The notation is handwritten and includes some corrections and markings.

tenor

*[Handwritten signature]*


CSUS R3

ESUS 6

ESUS

BA

BA



E7

Intro the other side of town

Vocals

D7 Gsus Asus

B<sup>b</sup>Δ7 FΔ7 A<sup>b</sup>Δ7 E<sup>b</sup>Δ7 F D7

fade out on intro last time

SOLO

back to intro

form

Intro vocals x2 solo intro vocals x1 Intro fade

Handwritten musical notation on a three-staff system. The top staff has notes with accidentals (b, #) and a slur. The middle staff has notes with accidentals. The bottom staff has notes with accidentals.

B<sup>b</sup>-bc      A<sup>b</sup>-b      EA      Falt

g alt      C7

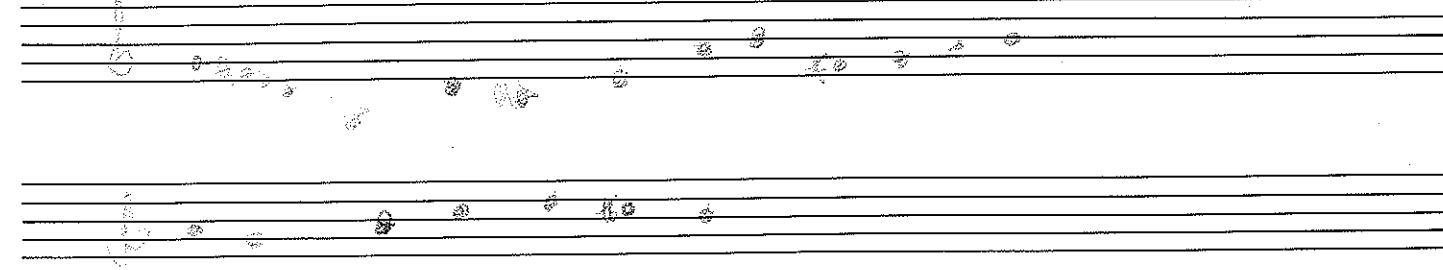
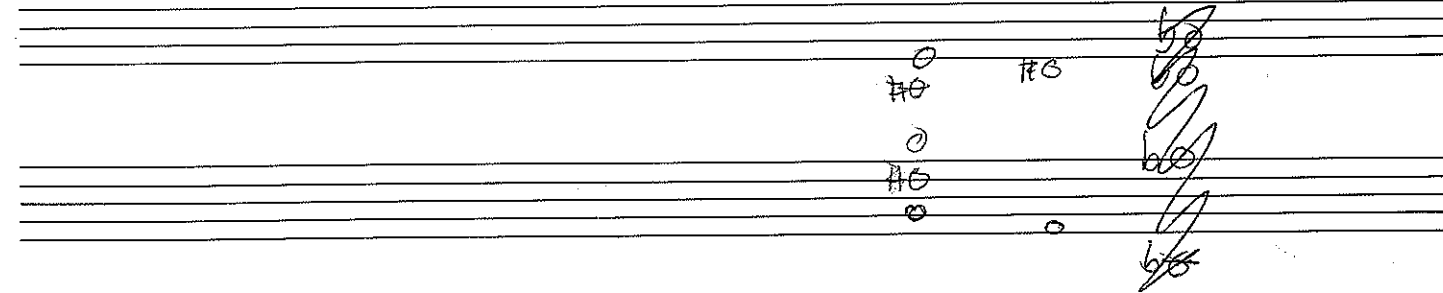
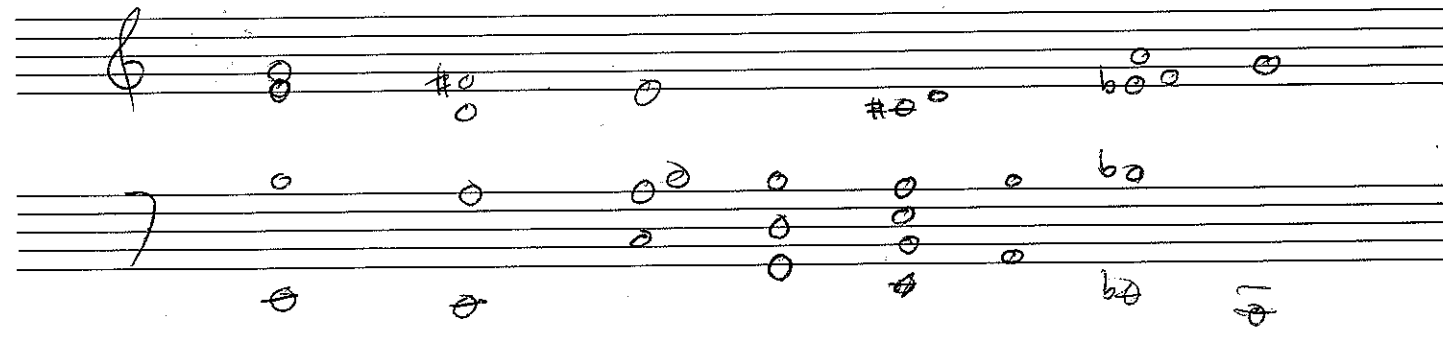
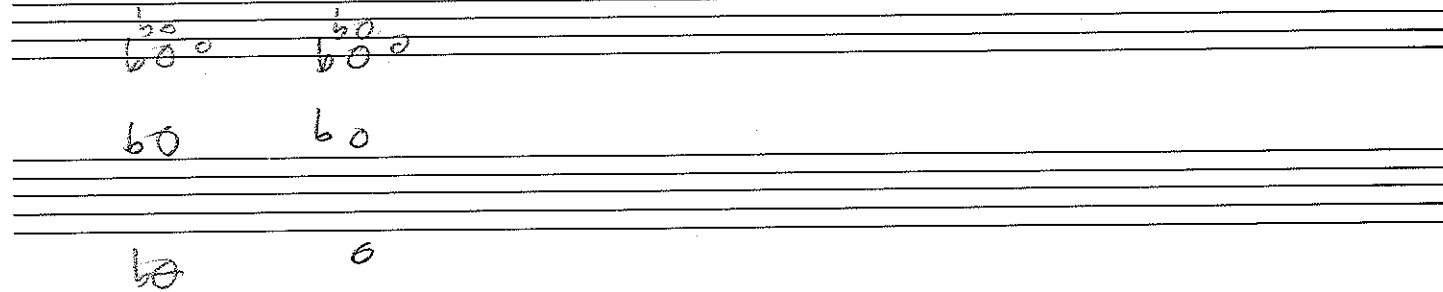
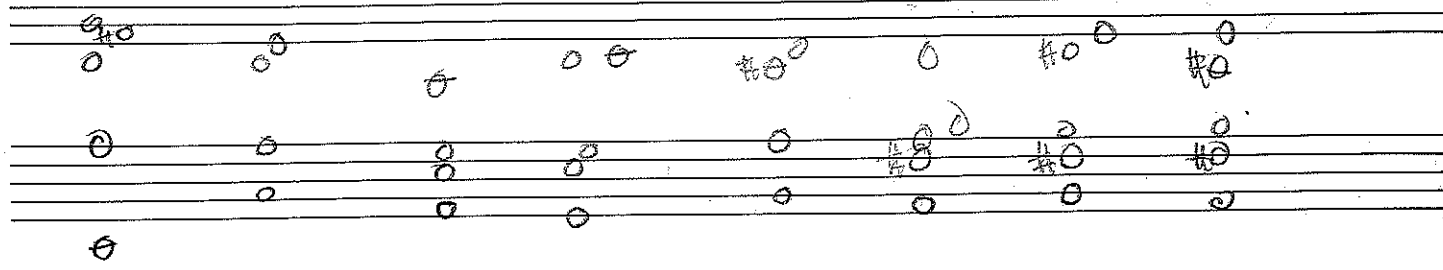
hip tick

Verse C-      Hs up to you

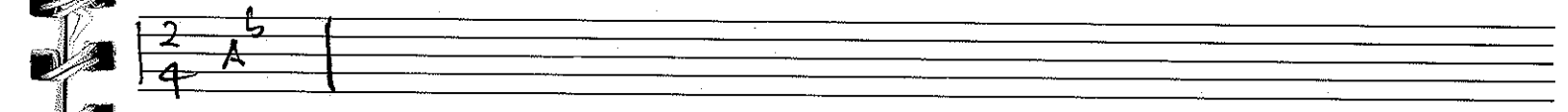
chorus C-

29 apr pretty purdie

# \*



Intro 1st 4 bars Jealous Guy



2 may 95

(C-)

D F# E E#

(C-)

ballad 1 beat/bar

more than you'll ever know

D-7

A-7

D-7

lick

A-7

A<sup>b</sup>-7

G-7

A7 alt

B<sup>b</sup>7

A7

D-

D-7 / C

B<sup>b</sup>

B<sup>b</sup>7

A7

D-7 ⊕

lick

A-7

D-7

A-7

Handwritten musical notation on two staves. The first staff contains several groups of notes, mostly beamed eighth notes, with some accidentals (flats). The second staff contains fewer notes, including some beamed eighth notes and a few accidentals.

Handwritten musical notation on two staves. The first staff has a few notes, including a beamed eighth note. The second staff has a few notes, including a beamed eighth note.

Handwritten musical notation on two staves. The first staff has a few notes, including a beamed eighth note. The second staff has a few notes, including a beamed eighth note.

Handwritten musical notation on two staves. The first staff has a few notes, including a beamed eighth note. The second staff has a few notes, including a beamed eighth note.

Art D- A<sup>b</sup> D<sup>b</sup> D

Handwritten musical notation on two staves. The first staff contains several groups of notes, mostly beamed eighth notes, with some accidentals (flats). The second staff contains fewer notes, including some beamed eighth notes and a few accidentals.

Handwritten musical notation on two staves. The first staff contains several groups of notes, mostly beamed eighth notes, with some accidentals (flats). The second staff contains fewer notes, including some beamed eighth notes and a few accidentals.



Whos screaming? 2 may 95

alt ← alt D7sus+13

BLOWN

D<sup>b</sup>/F C/E E- B- CΔ7sus FΔ7sus A<sup>b</sup>7sus G7sus

EΔ7 D<sup>b</sup>Δ7 F<sup>#</sup>Δ7 BΔ7

E- (alt D7sus CΔ7)

E=Δ

LET'S STAY TOGETHER

G-7 A-7 G-7 A-7 G-7 A-7 G-7 C7

F. Vocals

B<sup>b</sup> D<sup>b</sup>

A- G- F / E D- (sus)

A- G- F / E D- (sus)

E-7 A-7

G- B<sup>b</sup> / A D- / C

G- A<sup>b</sup> G-

A<sup>b</sup> B<sup>b</sup> / A D- / C D. \$

G-7 A-7

G-7 B<sup>b</sup> / A D- / C

A<sup>b</sup>7

Screamin' 97 blow

4x

Handwritten musical notation on the left page, featuring chords and melodic lines. Chords include E<sup>b</sup>Δ, D<sup>b</sup>Δ, F<sup>#</sup>Δ, BΔ7, B, E<sup>b</sup> alt, DΔ7 sus, CΔ7, and B<sup>b</sup>/E (min).

BAUAD

colla voce

Handwritten musical notation on the right page, featuring chords and melodic lines. Chords include D<sup>b</sup>, 97, C-7, F7, D<sup>b</sup>, 97 alt #7, F7, B<sup>b</sup>7 sus, E<sup>b</sup>, A<sup>b</sup>7, D<sup>b</sup>, 9 alt, C-7, F7, D<sup>b</sup>, 9 F<sup>#</sup> F7, B<sup>b</sup>7 sus, E<sup>b</sup>, A<sup>b</sup>, D<sup>b</sup>, C-7, A<sup>b</sup>, 9 F<sup>#</sup> F7 B7, E<sup>b</sup>, A<sup>b</sup>, D<sup>b</sup>, 97, top.

these three <sup>bars</sup> are tagged.

B 0 9 Giant steps N P

A D G

c-7 bird 2-5

Brd pattern

brd 2-5

BASS

D-

metallurgy

groove

# Chinese Music

Handwritten musical notation on a five-line staff. It begins with a treble clef and a 7/4 time signature. The notation includes various notes, rests, and accidentals (sharps and flats).

Handwritten musical notation on a five-line staff, continuing the piece. It features a treble clef and a 7/4 time signature, with notes and accidentals.

Handwritten musical notation on a five-line staff, continuing the piece. It features a treble clef and a 7/4 time signature, with notes and accidentals.

$A^b-7$   $B/E$   $F^{\#}/B$   $A^b/D^b$

Handwritten musical notation on a five-line staff, continuing the piece. It features a treble clef and a 7/4 time signature, with notes and accidentals.

$G^{alt}$   $D-7$   $A^{\#}/D^{\#}$

Handwritten musical notation on a five-line staff, continuing the piece. It features a treble clef and a 7/4 time signature, with notes and accidentals.

Handwritten musical notation on a five-line staff, continuing the piece. It features a treble clef and a 7/4 time signature, with notes and accidentals.

Handwritten musical notation on a five-line staff. It begins with a treble clef and a 7/4 time signature. The notation includes various notes, rests, and accidentals. Above the staff, there are handwritten labels: "A E- D/C PRETTY PURDIE", "A- C/G", "B- A9sus", "E-A/B", "A69", "E-A/B", "A69", "B E sus", "C (b6)", "F-", "D^b7", "B-", "G", "E alt", "A-", "E alt", "G sus", "F# sus".

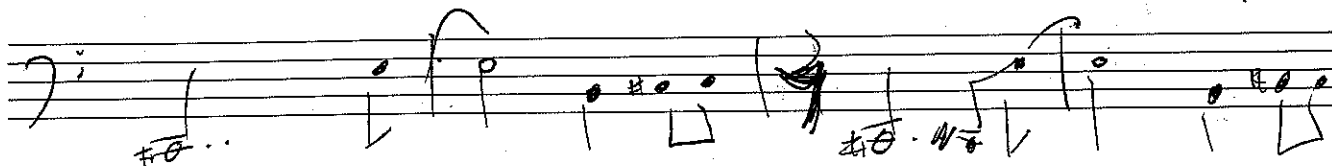
Handwritten musical notation on a five-line staff, continuing the piece. It features a treble clef and a 7/4 time signature, with notes and accidentals.

Handwritten musical notation on a five-line staff, continuing the piece. It features a treble clef and a 7/4 time signature, with notes and accidentals.

Handwritten musical notation on a five-line staff, continuing the piece. It features a treble clef and a 7/4 time signature, with notes and accidentals.

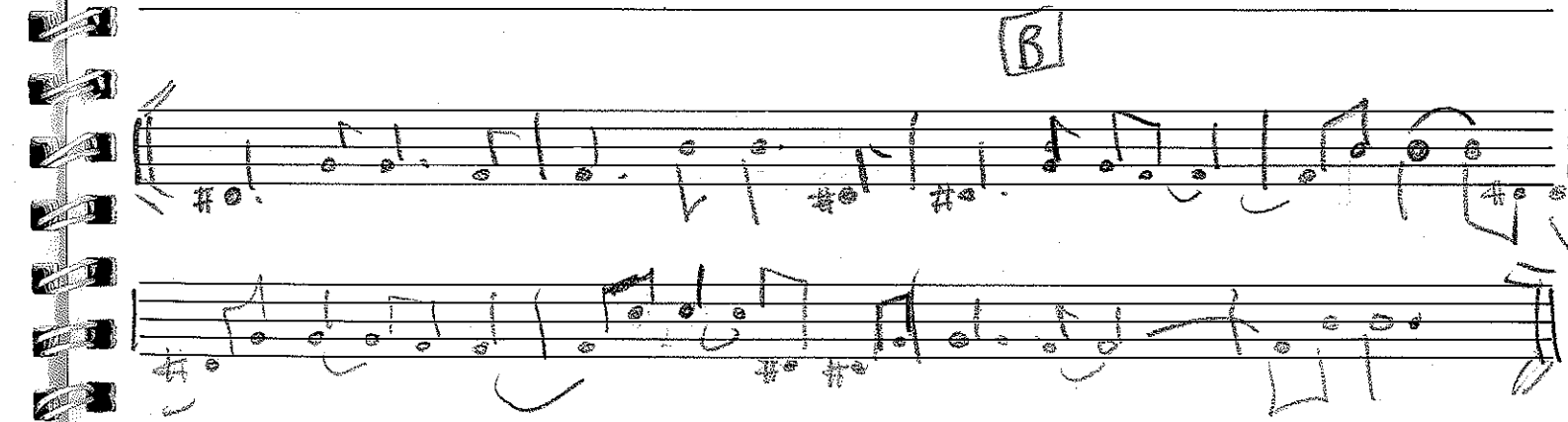
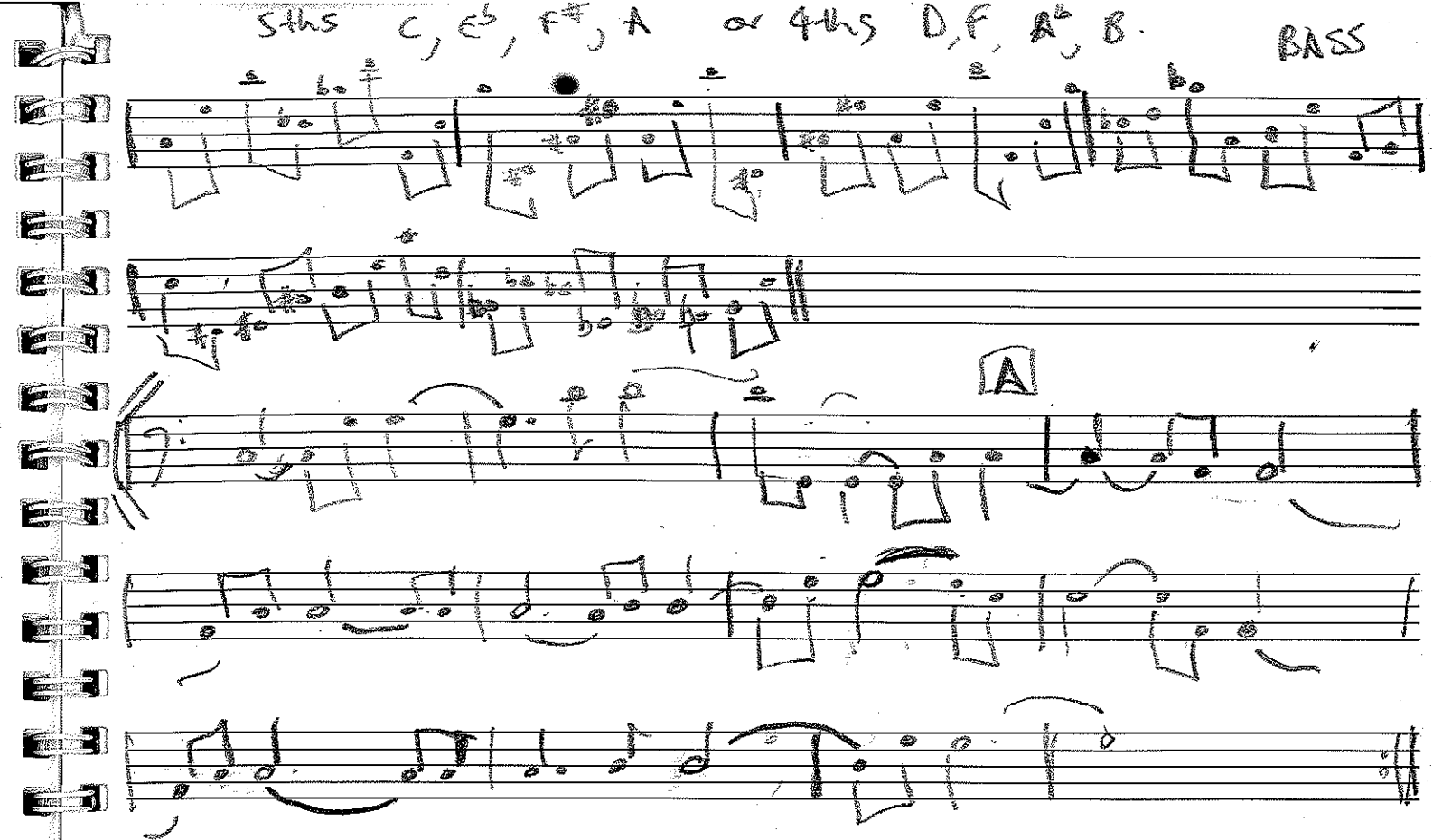
Handwritten musical notation on a five-line staff, continuing the piece. It features a treble clef and a 7/4 time signature, with notes and accidentals.

# Germany Groove



5ths C, E<sup>b</sup>, F<sup>#</sup>, A or 4ths D, F, A<sup>b</sup>, B.

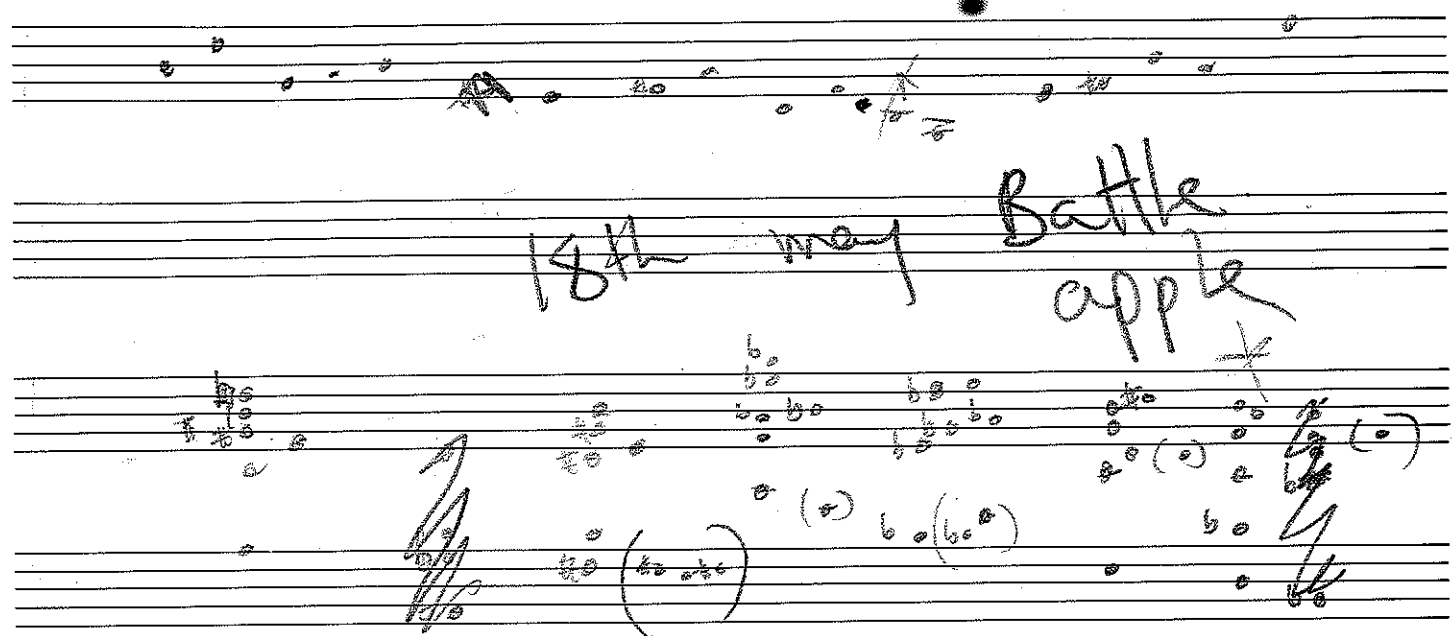
BASS



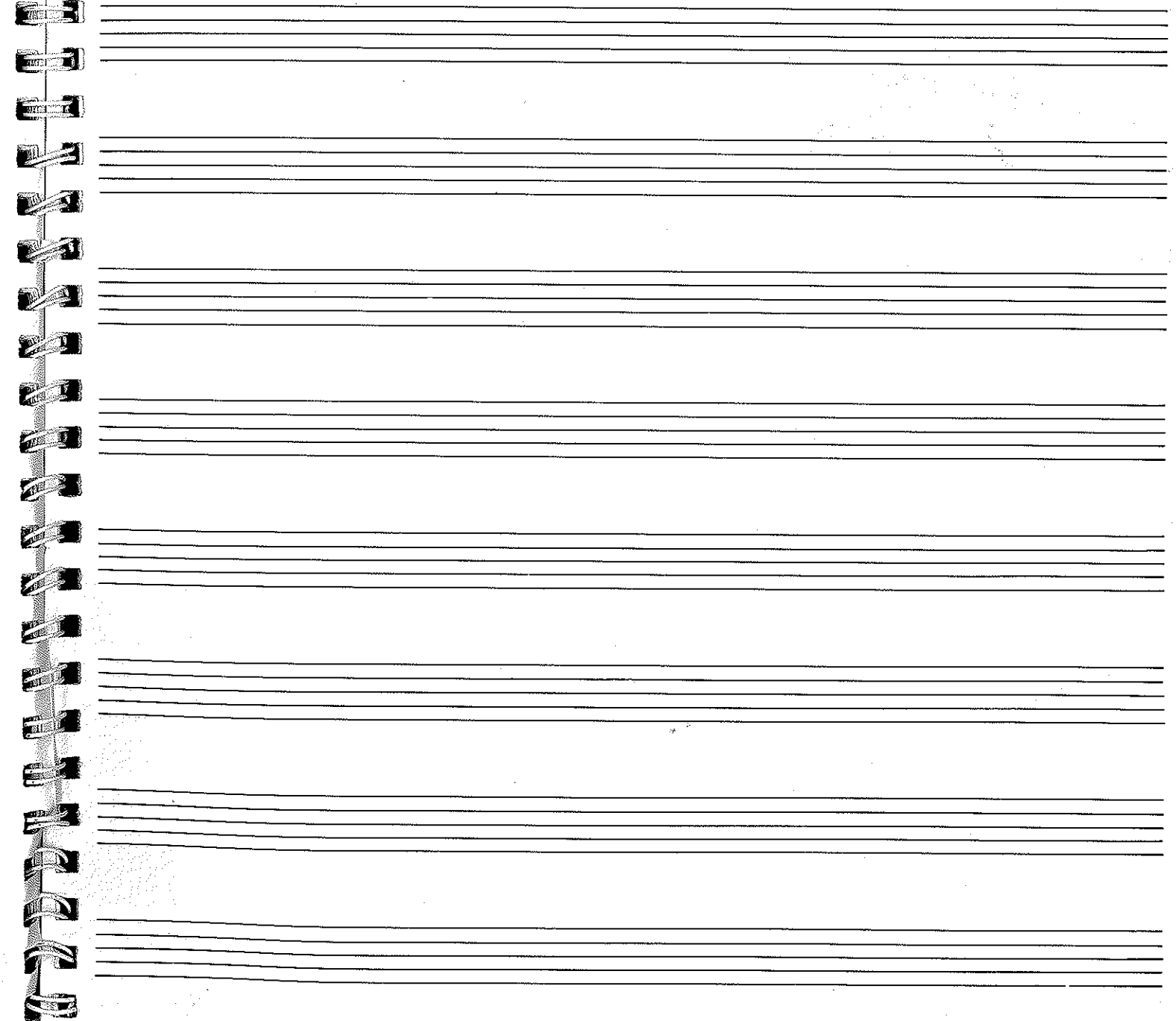
AA BA

Stolen Ven

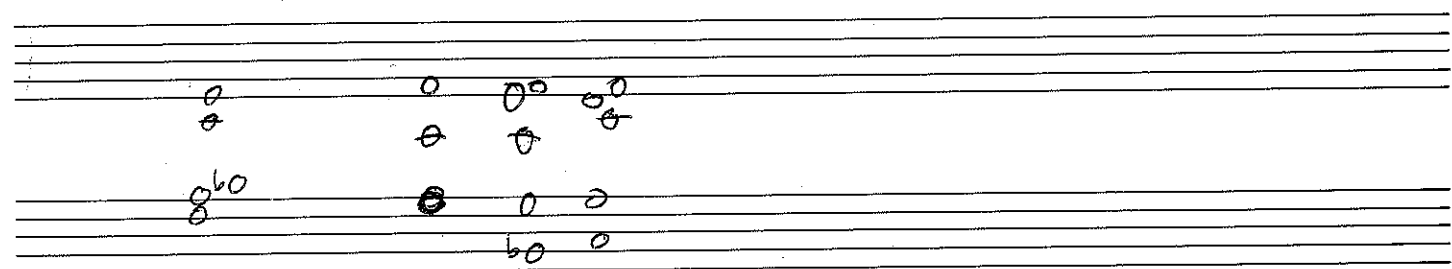
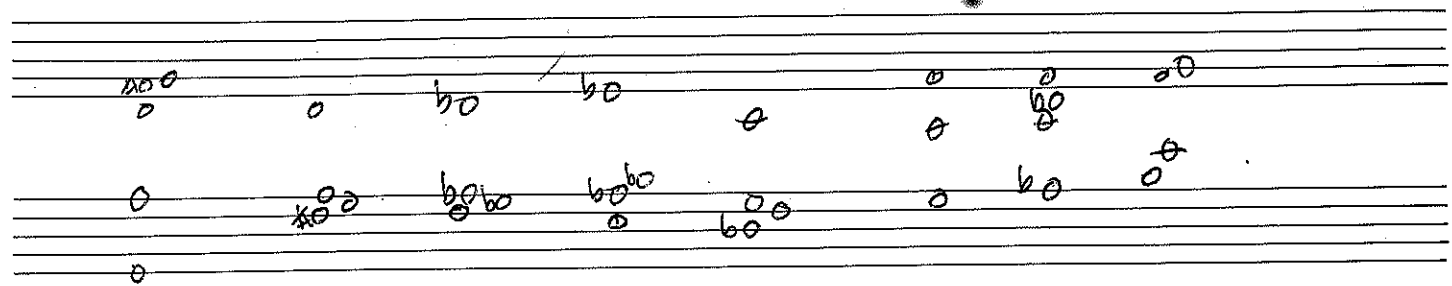
18th May Battle  
apple



\*



If it were a bell



D<sup>b</sup> open

B<sup>b</sup> C<sup>b</sup>6

E<sup>b</sup>Δ7

C-7<sup>b</sup>6

FΔ7

D<sup>b</sup>Δ7

G-(<sup>b</sup>6)

CΔ7

G-(<sup>b</sup>6)

CΔ7

BΔ7

B<sup>b</sup>Δ7

C-(<sup>b</sup>6)

D-(<sup>b</sup>6)

FΔ7

D<sup>b</sup>Δ7

keep the tape running for

o | o | o. | ♪ |

Bridge

A- GΔ7 B-/F# FΔ7 FΔ7 3X

D- D-(66)

D-6 D-

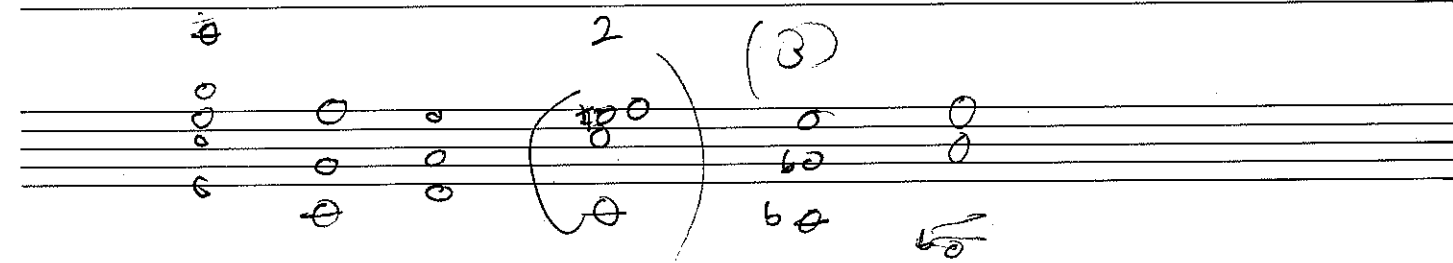
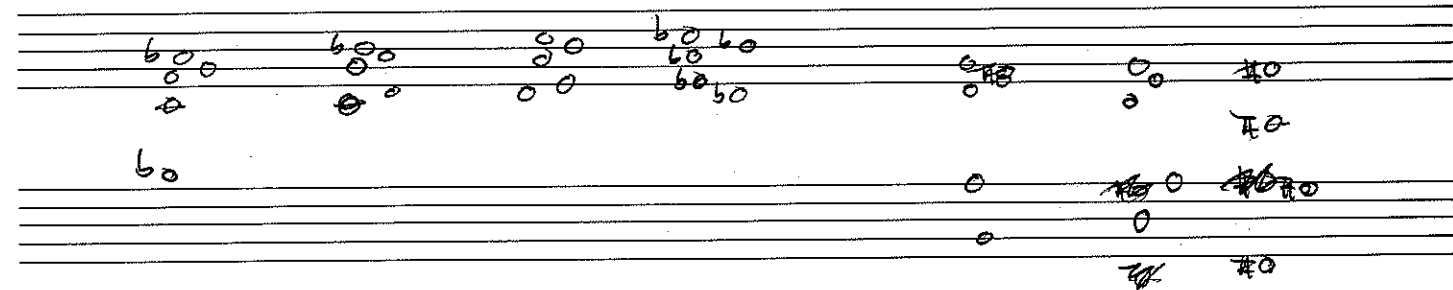
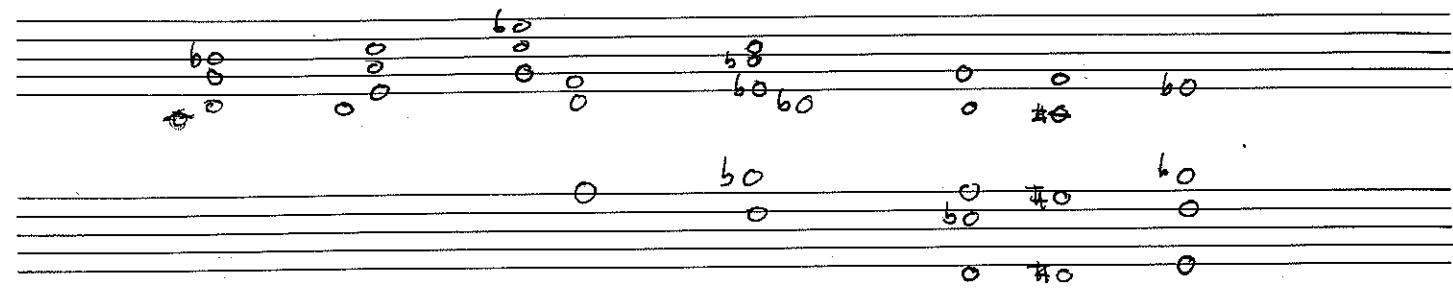
A- GΔ7 B-/F# FΔ7 FΔ7

AΔ7 D.S

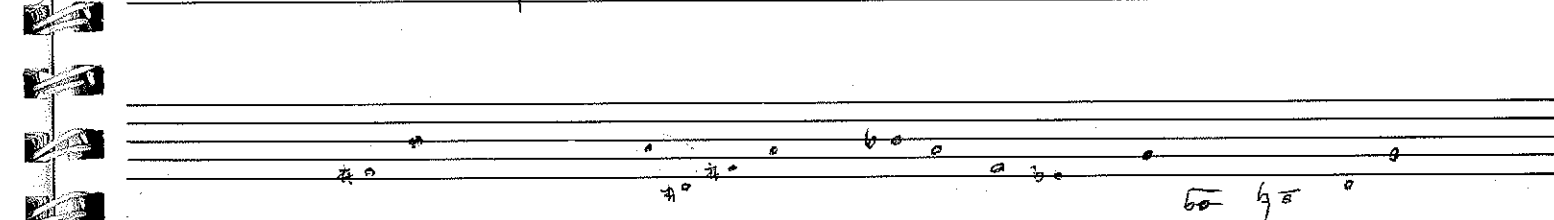
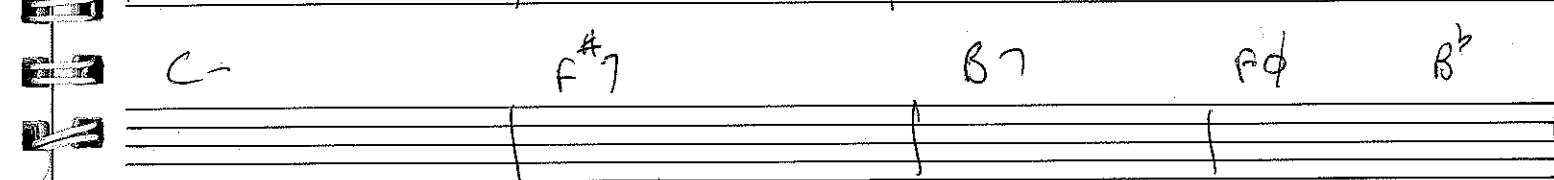
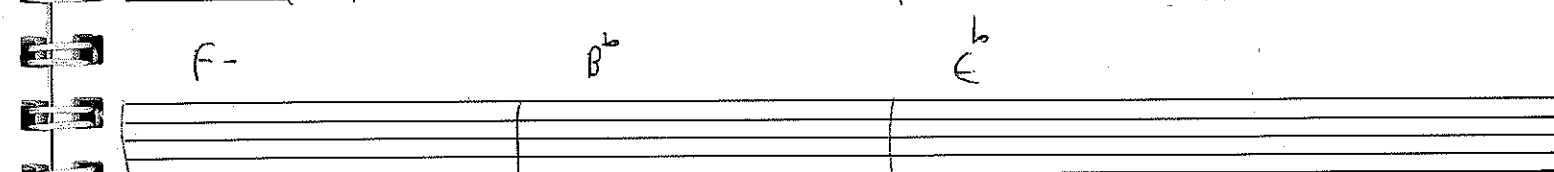
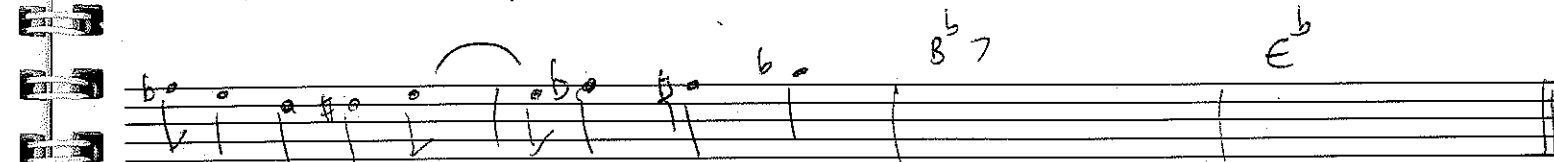
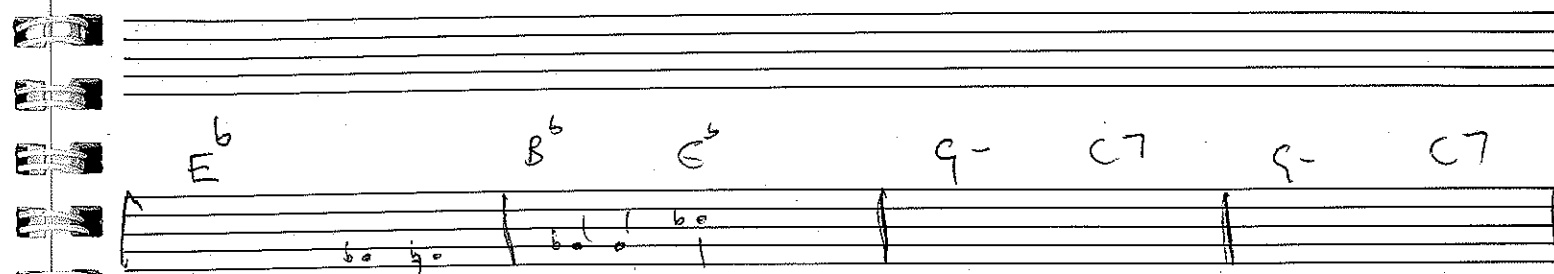
chippies 24 may



26 JUNE



I let a song go out of my



Handwritten musical notation on a five-line staff, featuring various notes, rests, and accidentals. The notation includes a treble clef, a key signature of one sharp (F#), and a common time signature (C). The notes are written in a stylized, handwritten manner, with some notes being beamed together. The staff is divided into measures by vertical bar lines. The notation includes a treble clef, a key signature of one sharp (F#), and a common time signature (C). The notes are written in a stylized, handwritten manner, with some notes being beamed together. The staff is divided into measures by vertical bar lines.

[illegible]

This image shows a blank, lined page from a spiral-bound notebook. The page is white with horizontal ruling lines. The spiral binding is visible on the left edge, and the page is otherwise empty of any text or markings.

This image shows a blank, lined page from a spiral-bound notebook. The page is white with horizontal ruling lines. A vertical margin line is present on the left side, creating a narrow left margin. The spiral binding of the notebook is visible along the left edge of the page. The page is otherwise empty of any text or markings.

\_\_\_\_\_

# F# - chord scale

F#  
F#  
F#

•  
•

F#

F#

F#

F#

F#

F#

F#

F#

F#

F#

F#

F#

F#

F#

F#

F#

F#

F#

F#

F#

F#

F#

F#

F#

F#

F#

F#

F#

F#

F#

F#

F#

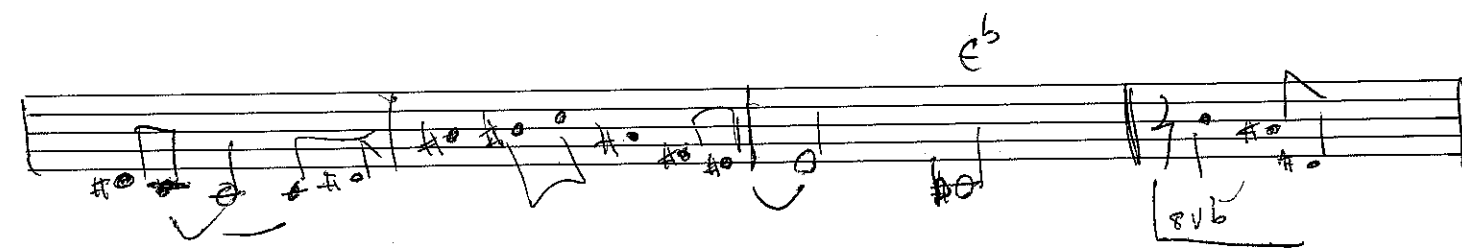
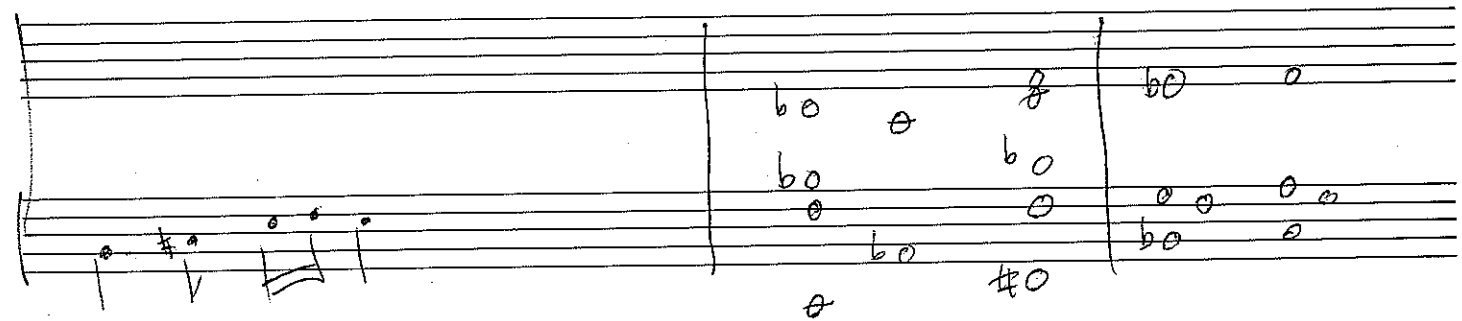
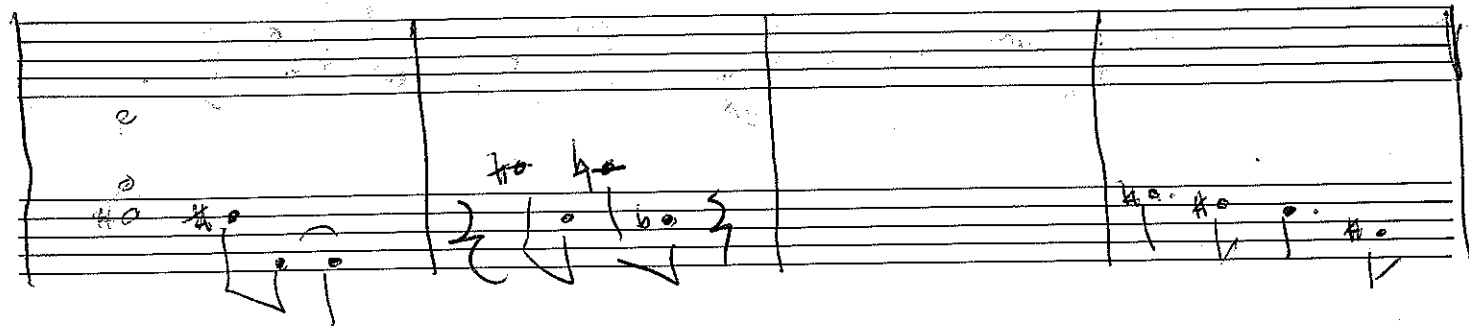
F#

F#

F#

F#





Handwritten musical notation on a five-line staff. It features several groups of notes, some with accidentals (sharps and flats) and some with stems. The notation is somewhat sparse and appears to be a sketch or a specific rhythmic pattern.

Handwritten musical notation on a five-line staff. It includes a treble clef and a series of notes with stems, some marked with accidentals. The notation is written in a fluid, handwritten style.

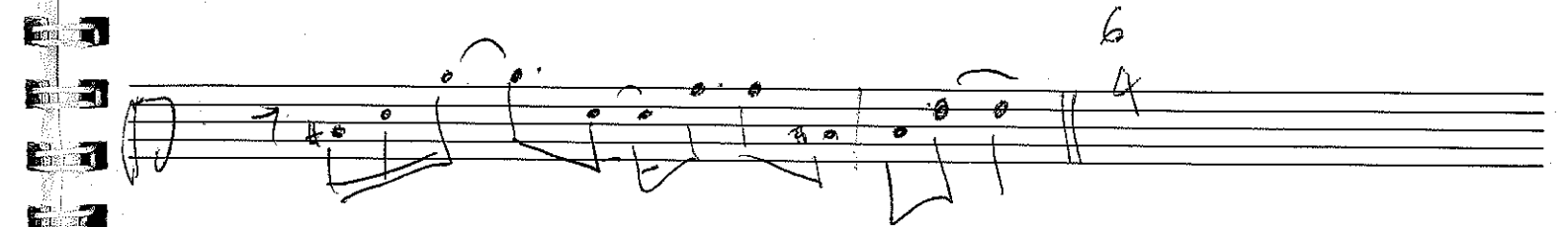
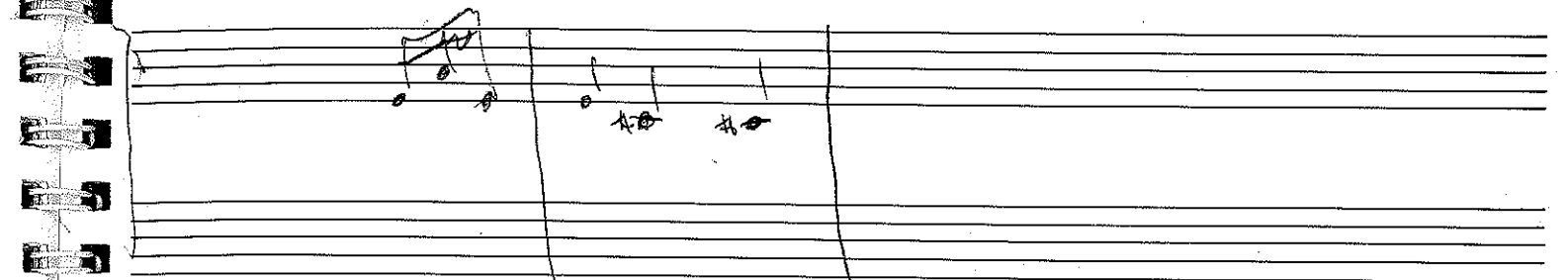
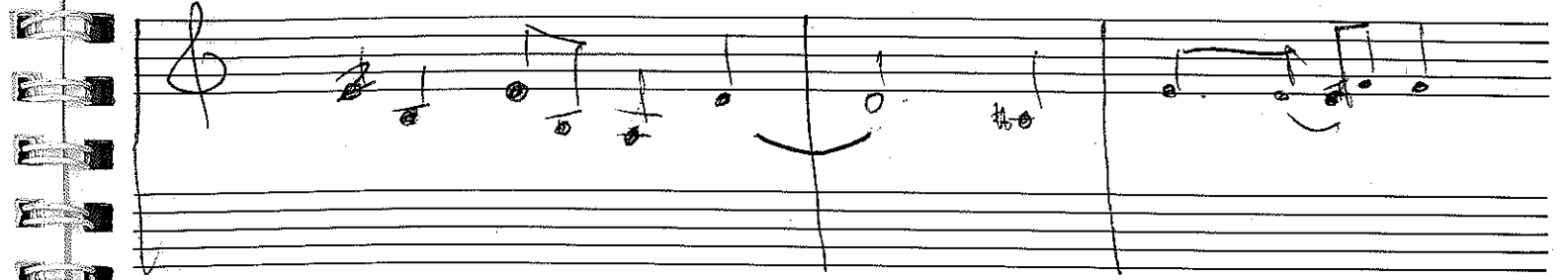
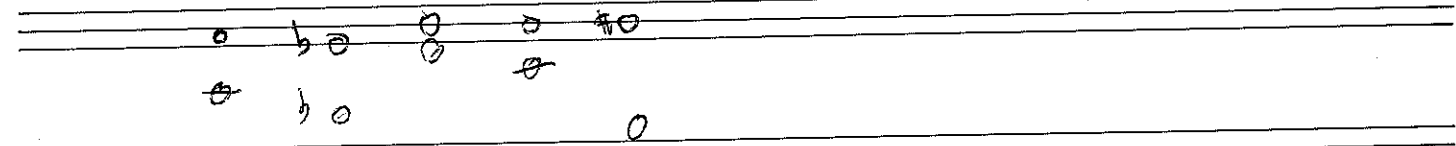
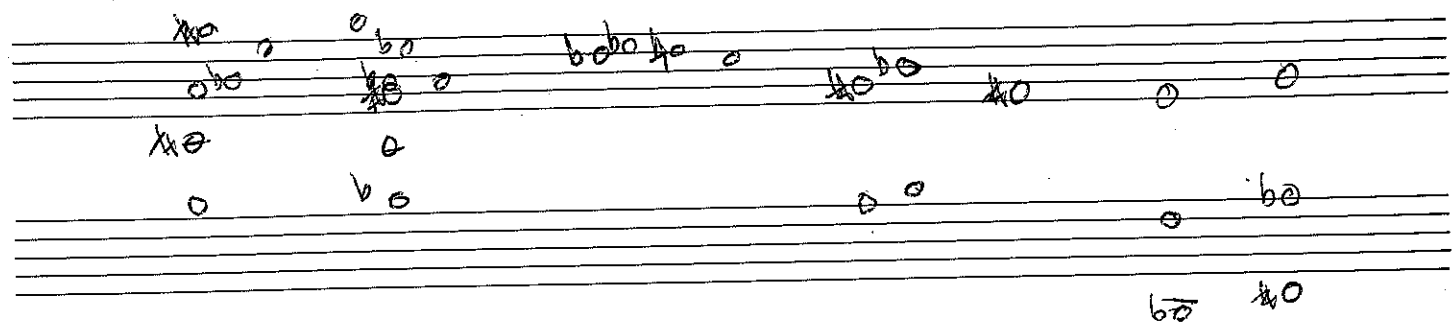
Handwritten musical notation on a five-line staff. It includes a treble clef and a series of notes with stems, some marked with accidentals. The notation is written in a fluid, handwritten style.

Handwritten musical notation on a five-line staff. It includes a treble clef and a series of notes with stems, some marked with accidentals. The notation is written in a fluid, handwritten style.

Handwritten musical notation on a five-line staff. It includes a treble clef and a series of notes with stems, some marked with accidentals. The notation is written in a fluid, handwritten style.

27/7 ✓

DICK DASTAROLY



D- C- B- (2)

Bsus Gsus A/F B<sup>b</sup>

D- C- E (F- E<sup>b</sup>)

PARK LUM 31 JUL

B-

A<sup>#</sup> C-

He

F<sup>#</sup> G B<sup>b</sup>

A

F G<sup>#</sup>

Sus

Bsus

B- A B A D7 G C- A/C C

A

Repetend solo



Handwritten musical notation on a five-line staff. The notation includes a treble clef, a key signature of one sharp (F#), and a time signature of 4/4. The melody consists of a series of eighth and quarter notes. A bracket above the staff groups the first four measures, with the label "G/A" written above it. Below the staff, the letters "B F G" are written under the first three measures. A large bracket on the right side of the staff groups the last four measures.

Handwritten letter "E" on a five-line staff.

BASS

FIND EARTH

Intro

Handwritten musical notation for the Intro section on a five-line staff. The notation includes a bass clef, a key signature of one sharp (F#), and a time signature of 4/4. The melody consists of a series of eighth and quarter notes. The section ends with a double bar line.

verse

Handwritten musical notation for the verse section on a five-line staff. The notation includes a bass clef, a key signature of one sharp (F#), and a time signature of 4/4. The melody consists of a series of eighth and quarter notes. The section ends with a double bar line.

repeat till cue.

chorus.

Handwritten musical notation for the chorus section on a five-line staff. The notation includes a bass clef, a key signature of one sharp (F#), and a time signature of 4/4. The melody consists of a series of eighth and quarter notes. The section ends with a double bar line.

back to verse.

after 2nd chorus  
repeat intro then

back to chorus again

Handwritten musical notation on a five-line staff, consisting of a treble clef, a key signature of one flat (B-flat), and a single eighth note.

Handwritten musical notation on a five-line staff, featuring a treble clef, a key signature of one flat, and a series of beamed eighth notes.

Handwritten musical notation on a five-line staff, showing a treble clef, a key signature of one flat, and a series of beamed eighth notes.

Handwritten musical notation on a five-line staff, including a treble clef, a key signature of one flat, and a series of beamed eighth notes.



Handwritten musical notation on a five-line staff, consisting of a treble clef, a key signature of one flat, and a single eighth note.

Handwritten musical notation on a five-line staff, featuring a treble clef, a key signature of one flat, and a series of beamed eighth notes.

Handwritten musical notation on a five-line staff, showing a treble clef, a key signature of one flat, and a series of beamed eighth notes.

Handwritten musical notation on a five-line staff, including a treble clef, a key signature of one flat, and a series of beamed eighth notes.

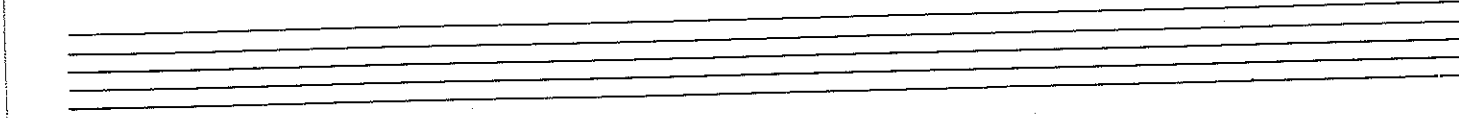
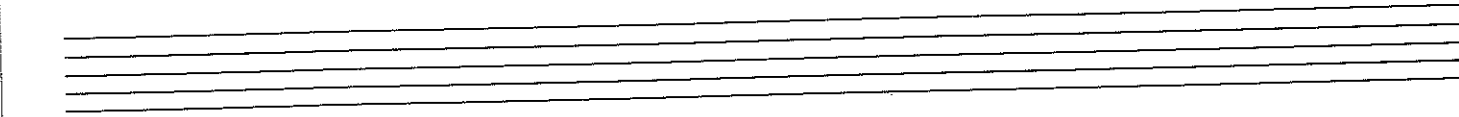
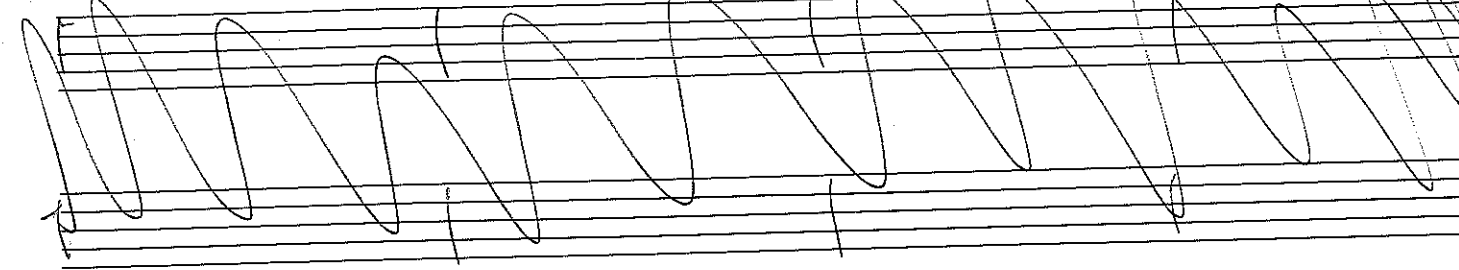
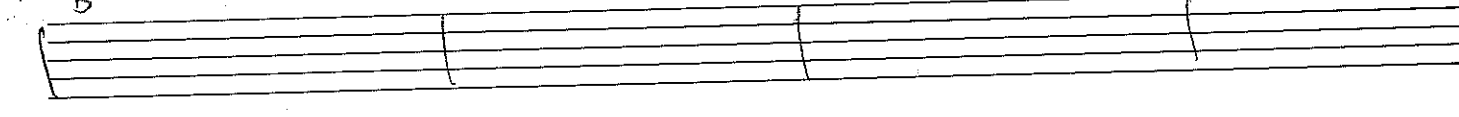
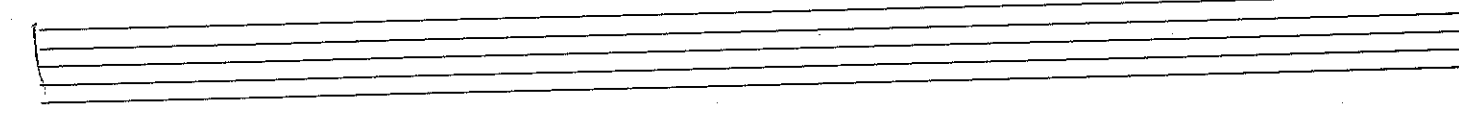
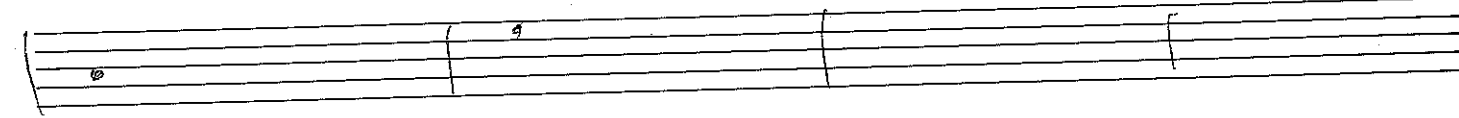
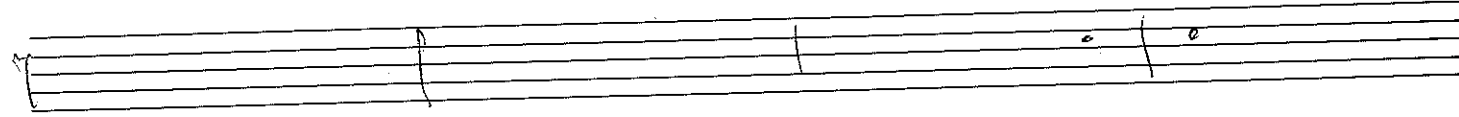
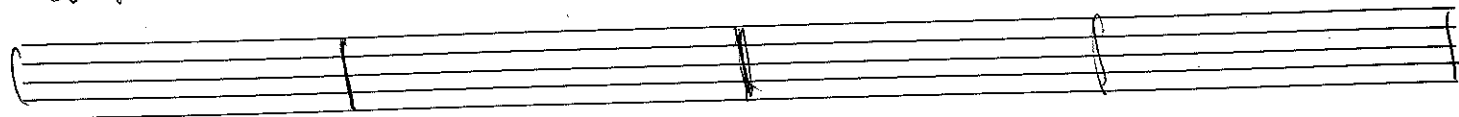
Handwritten musical notation on a five-line staff, consisting of a treble clef, a key signature of one flat, and a single eighth note.

Handwritten musical notation on a five-line staff, featuring a treble clef, a key signature of one flat, and a series of beamed eighth notes.

Handwritten musical notation on a five-line staff, showing a treble clef, a key signature of one flat, and a series of beamed eighth notes.

intro

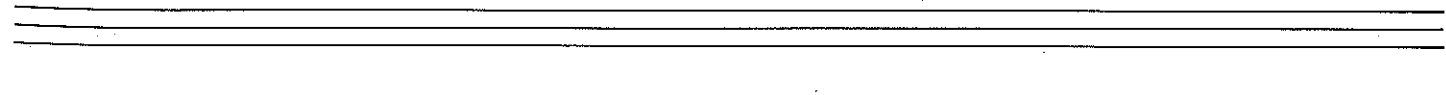
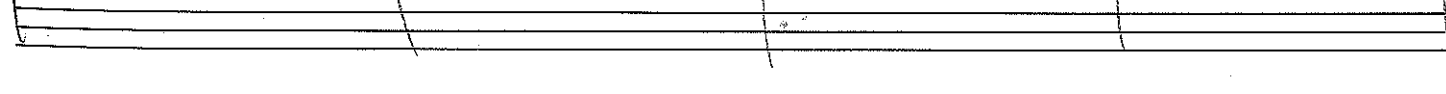
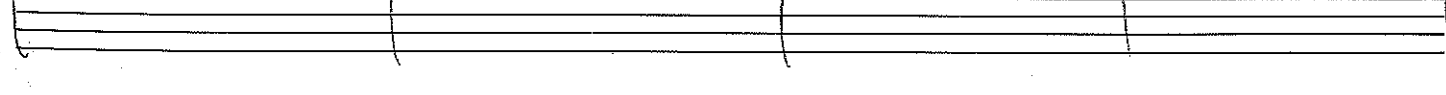
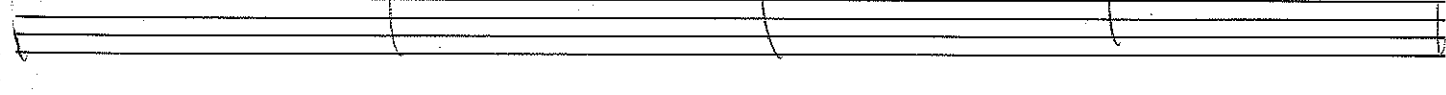
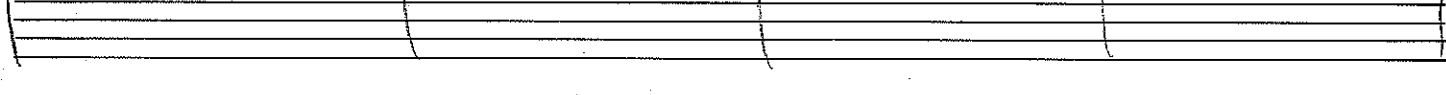
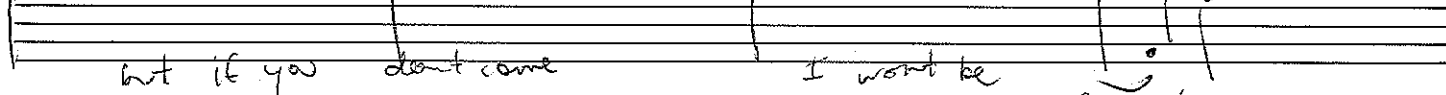
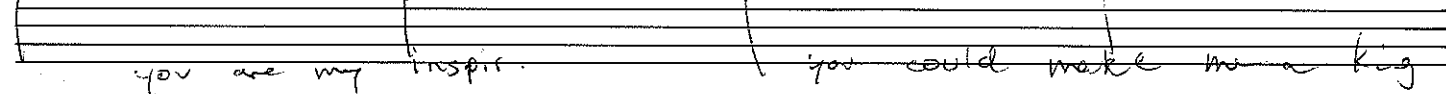
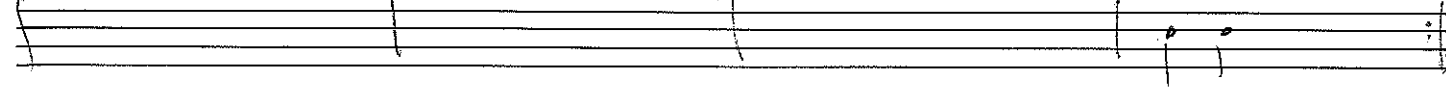
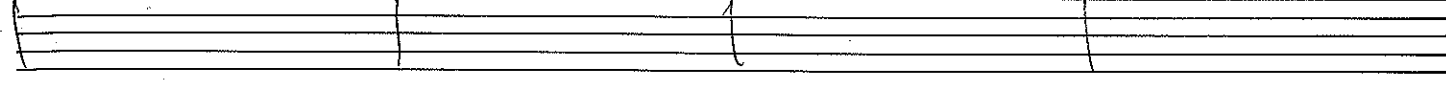
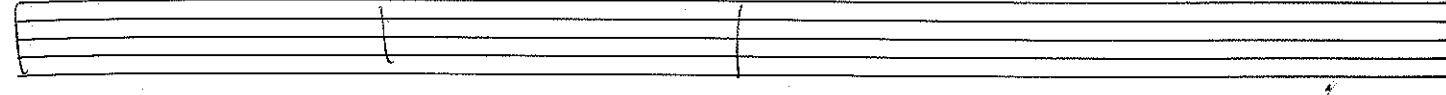
2+



D-

help the poor

charlie  
singleton



Handwritten musical notation on the left page, featuring chords and notes:

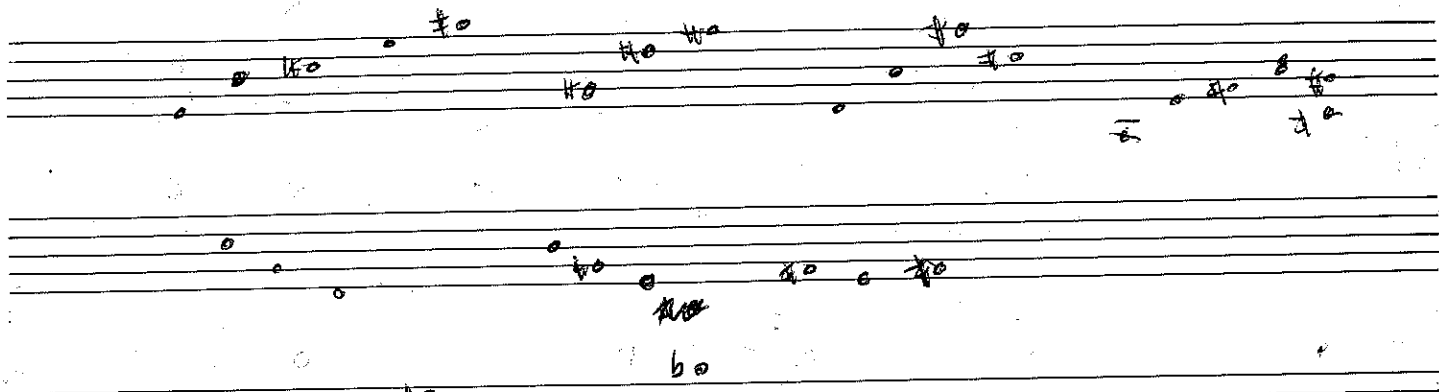
- Staff 1: Chords  $F$ ,  $G-$ ,  $B^b D^b$
- Staff 2: Chords  $F-7$ ,  $D^b$ ,  $Csus$ ,  $D^b$

Handwritten musical notation on the right page, featuring chords and notes:

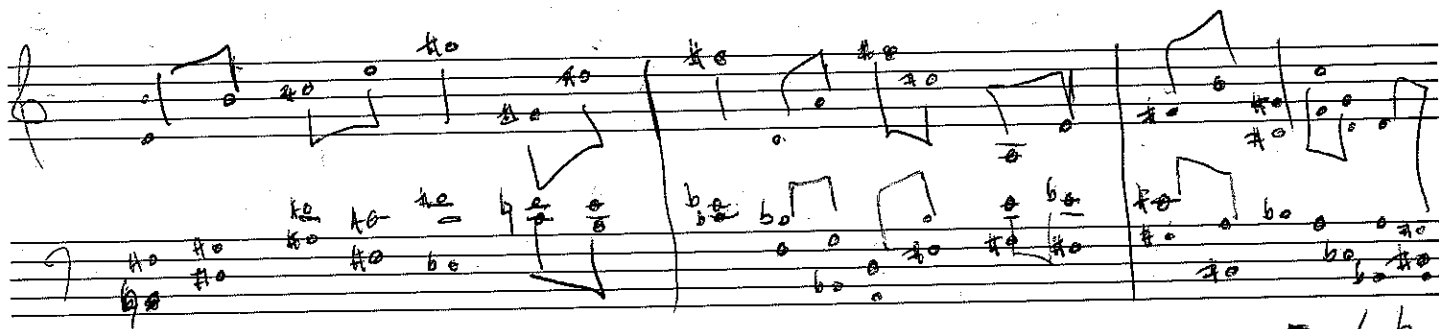
- Staff 1: Chords  $Bsus$ ,  $A^{\#}$ ,  $A^b$ ,  $A^b$ ,  $B$
- Staff 2: Chords  $A$ ,  $E$ ,  $A$ ,  $A^b$ ,  $C^{\#}$ ,  $B$
- Staff 3: Chords  $A$ ,  $A^b$ ,  $C^{\#}$ ,  $D$ ,  $Bsus$
- Staff 4: Chords  $A$ ,  $A^b$ ,  $C^{\#}$ ,  $B$ ,  $A$ ,  $A^b$ ,  $C^{\#}$ ,  $B$
- Staff 5: Chords  $A$ ,  $A^b$ ,  $C^{\#}$ ,  $D$ ,  $Bsus$
- Staff 6: Chords  $A$ ,  $E$ ,  $A$ ,  $B$ ,  $B$ ,  $C^{\#}$ ,  $/B$
- Staff 7: Chords  $A$ ,  $E$ ,  $A$ ,  $B$ ,  $E$
- Staff 8: Chords  $A$ ,  $B$ ,  $E$ ,  $A$ ,  $D$ ,  $B$

head out of time  
chorus

solo  
chorus  
solo chorus solo



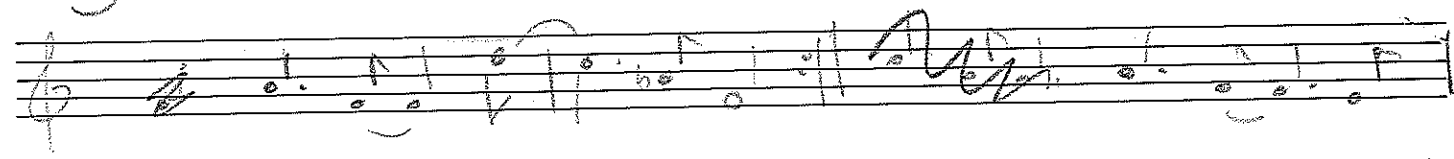
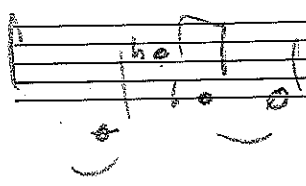
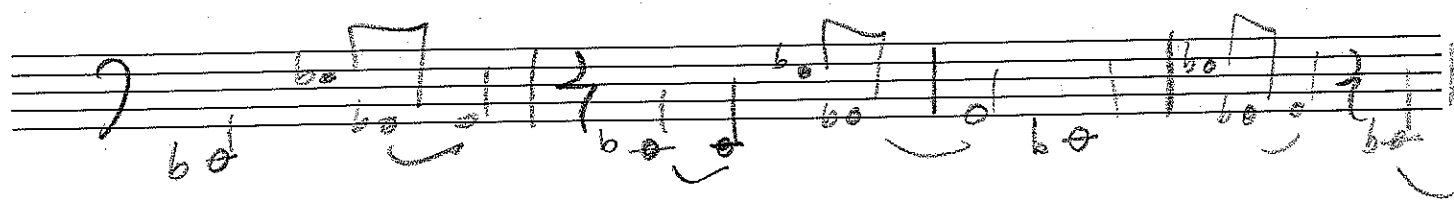
# TUDOR HOUSE



D-1<sup>b</sup>



B, V, C, F, C, D, D, B



20th may